

OPENING DOORS SINCE 1843

Loveitts^{est. 1843}
THE ESTATE AGENTS



Meadowside
Nuneaton, CV11 6NE

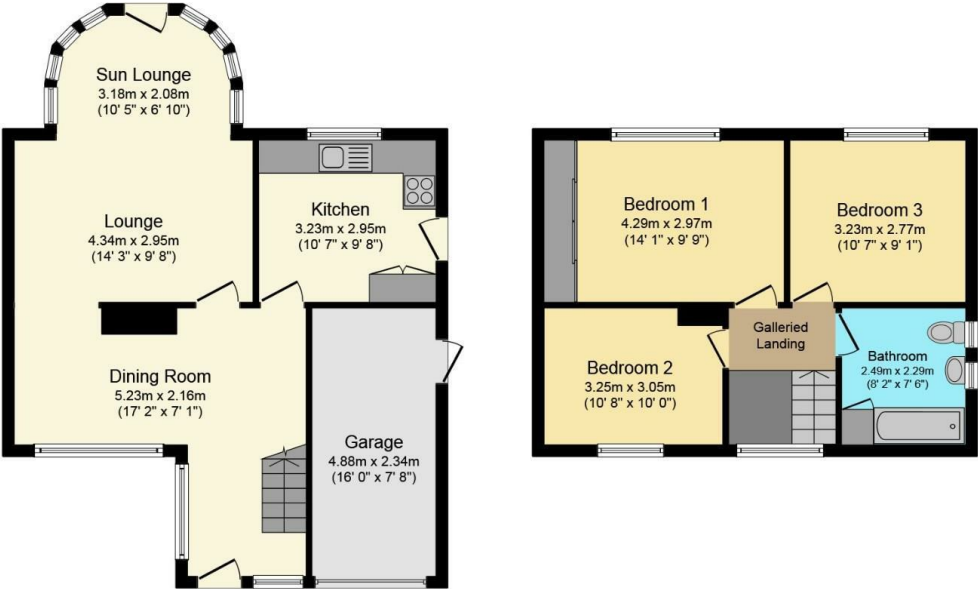
£290,000



Meadowside, Nuneaton, CV11 6NE

This well presented and much improved semi detached property is located in the highly sought after Whitestone area which in brief comprises entrance hall with feature staircase to the first floor and opens into the dining room. Spacious lounge with open sun lounge over looking the rear garden. Modern kitchen having a range of eye and base level units with integrated hob and oven. First floor landing provides access to the three good size bedrooms with the master bedroom having a range of fitted wardrobes. The bathroom has a modern white colour suite comprising a panelled bath with shower unit over and a vanity unit having integrated hand wash basin and W.C. The property also benefits from gas central heating, PVCu double glazing and security alarm. Outside the front garden is laid to lawn with a driveway providing access to the garage. The enclosed larger than average rear garden must be seen to appreciate the size being laid mainly to lawn with established shrub borders and paved patio area. Internal viewing is highly recommended to fully appreciate the spacious accommodation being offered for sale.

Area Map

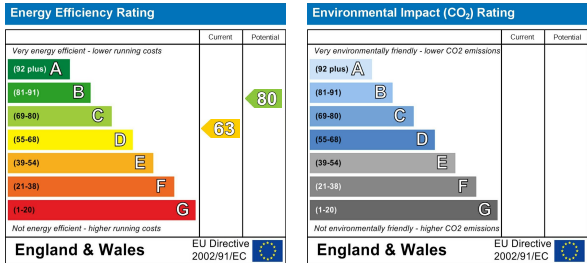


Ground Floor

First Floor

This Floor Plan is for illustration purposes only and may not be representative of the property. The position and size of doors, windows and other features are approximate. Unauthorized reproduction prohibited. © PropertyBOX

Energy Efficiency Graph



These particulars, whilst believed to be accurate are set out as a general outline only for guidance and do not constitute any part of an offer or contract. Intending purchasers should not rely on them as statements of representation of fact, but must satisfy themselves by inspection or otherwise as to their accuracy. No person in this firms employment has the authority to make or give any representation or warranty in respect of the property.



Nuneaton
39 Church Street, Nuneaton CV11 4AD
024 7634 7676

Registered in England & Wales Company no. 7558151